



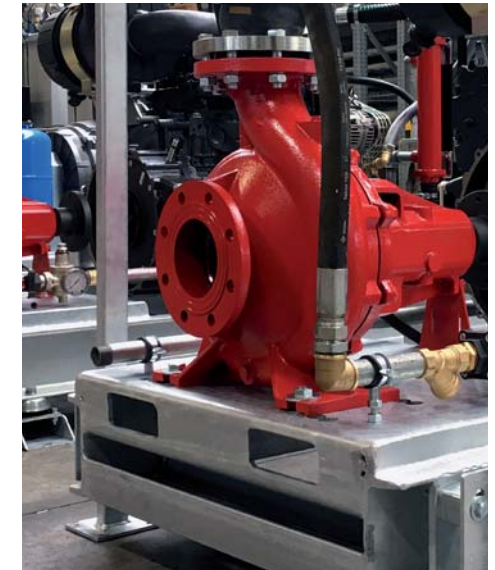
2026

Company Profile / ENGLISH

Corporate identity.

Excellence, innovation, passion and knowledge. These are the essential values of Ferbo, historic company that designs and produces irrigation solutions, fire-fighting systems and other solutions to meet energy demand.

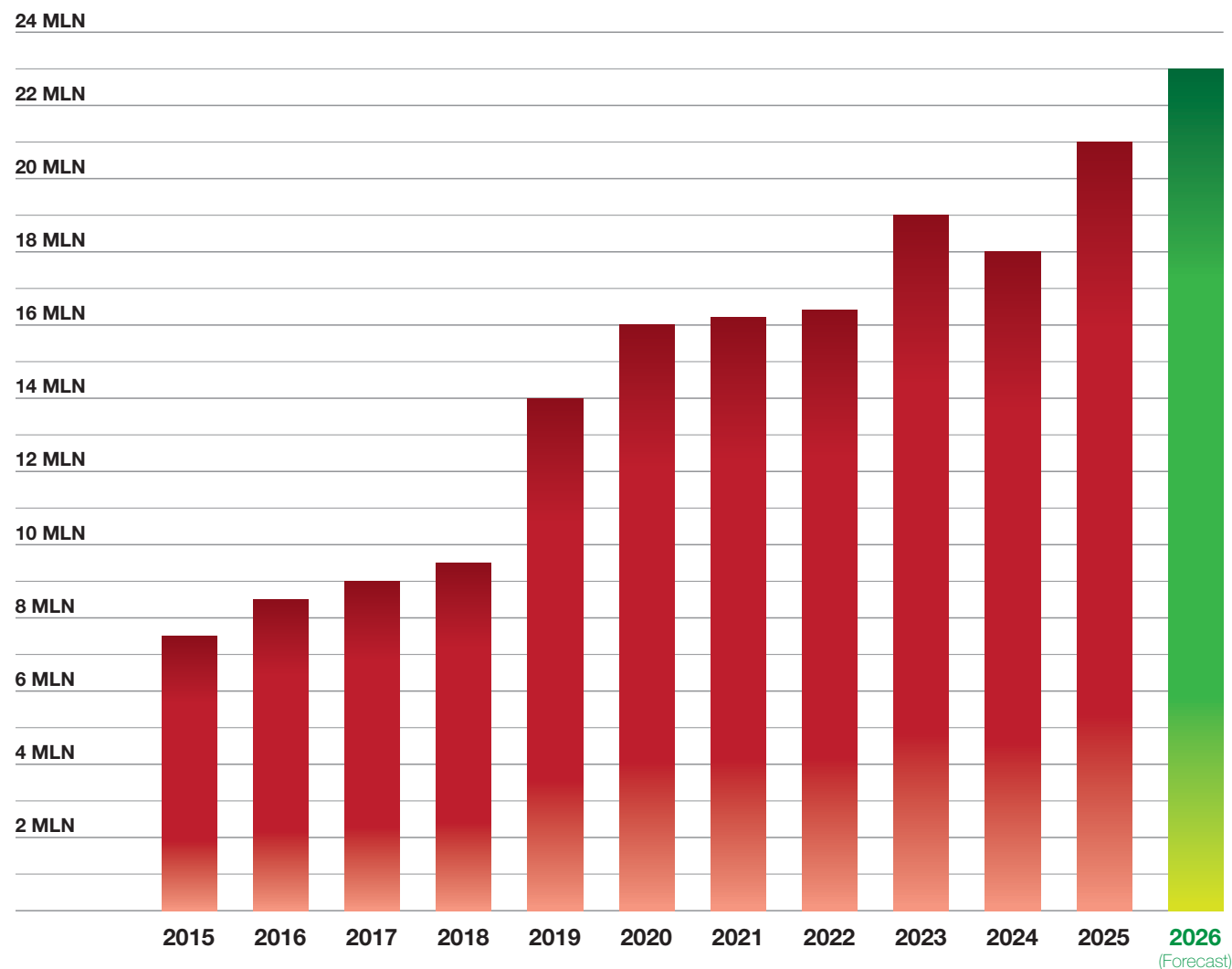
A dynamic reality located in the heart of Montefeltro, between Italian regions Marche, Toscana and Emilia Romagna. Ferbo is a determined, reactive and reliable company, that has laid its foundations on the ability to offer innovative solutions to respond to market needs.



Turnover and growth.

Thanks to its three departments, Rain, Energy and Fire, Ferbo has maintained a positive trend over the years, with an average annual growth rate of 10%.

These data allow us to forecast a constant increase in turnover even for future years.



International brand.

Ferbo is consolidating its important presence in worldwide markets.

Europe, Africa and Australia are our main continents reference nowadays.

In the next goals: development of the Asian and American markets.



Ferbo Rain Division.

Ferbo has been the first company in Italy to produce professional irrigation machines. The wide and differentiated production range adapts to the diverse needs of the customer; the FerboRain hose reels, with their innovative capabilities, have low pressure absorption and low maintenance costs. Likewise, motor pump groups range allows the customer to have access to multiple solutions too; indeed, we work directly in co-operation with the best engines and pumps manufacturers.



Fixed machines (F) and
turntable machines (G)
and hydraulic machines (H)
for irrigation.



FerboRain FB



FerboRain G



FerboRain G



FerboRain GH



FerboRain Incorporated

Motor pump units and motor clutches.



Silent motor pump 4-6 cyl



Motor pump 4-6 cyl
with roof and net



Motor pump 4-6 cyl
with roof



Motor clutches
with roof and net



Selfpriming motor pump



Silent selfpriming
motor pump






Engines, pumps, control units.

Ferbo Rain

Engines brands.

 FPT	 DEUTZ	 VOLVO PENTA	 REHLKO	 HYUNDAI
 JOHN DEERE	 SCANIA	 BAUDOUIIN		

Pumps brands.

 CAPRARI	 ROVATTI	 SAER	 KSB	 DAGSO	 PIONEER
--	---	---	--	--	--

Control units brands.

 ID4	 ELCOS	 COMAP
--	---	--



Ferbo Energy **Division.**

Established in the year 2000 and boasting nowadays a global presence, Ferbo Energy is the company division dedicated to the design, production and commercialization of generating sets.

Ferbo Energy offers an extensive range of excellent systems, which meet the modern requirements of energy need, developed with research, advanced technology and manufactured with high quality materials. Ferbo allows the customization of products based on customer specifications.



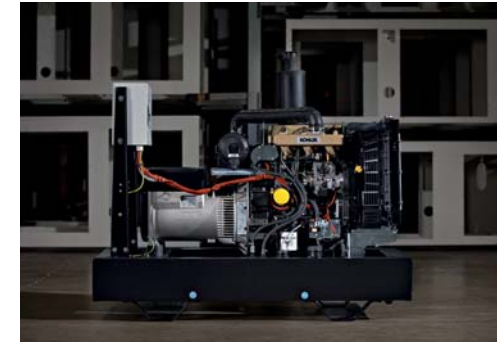
Generator sets.



3000 RPM
Open gen sets



3000 RPM
Soundproof gen sets



1500 RPM
Open gen sets



1500 RPM
Soundproof gen sets SV



1500 RPM
Soundproof gen sets S



1500 RPM
Soundproof gen sets SB

Special products.



Super soundproof gen sets 55 dB(A)



Gen sets in containers



Gen sets powered by natural gas



Lighting towers



PTO gen sets



Engine driven welders

Engines, alternators, control panels

Ferbo Energy

12

Engines brands.

						
<i>PERKINS</i>	<i>FPT</i>	<i>DEUTZ</i>	<i>VOLVO PENTA</i>	<i>CUMMINS</i>	<i>REHKO</i>	<i>HYUNDAI</i>
						
<i>mitsubishi MOTORS</i>	<i>YANMAR</i>	<i>HONDA</i>	<i>mtu</i>	<i>JOHN DEERE</i>	<i>SCANIA</i>	<i>MOTEURS Baudouin</i>
<i>MITSUBISHI</i>	<i>YANMAR</i>	<i>HONDA</i>	<i>MTU</i>	<i>JOHN DEERE</i>	<i>SCANIA</i>	<i>BAUDOUIIN</i>

Alternators brands.

			
<i>MECC ALTE</i>	<i>STAMFORD</i>	<i>LINZ ELECTRIC</i>	<i>LEROY SOMER</i>

Control panels brands.

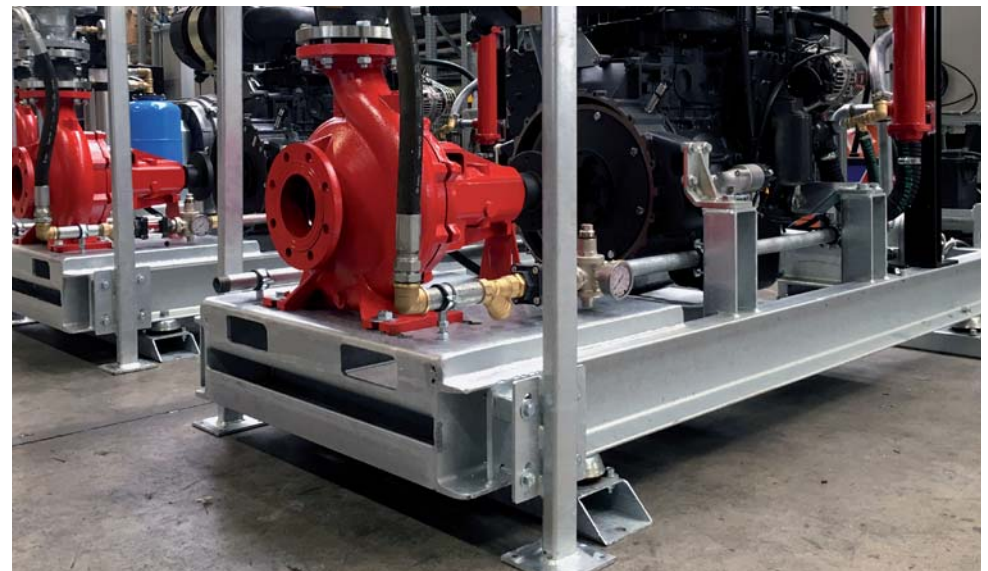
		
<i>LOVATO</i>	<i>COMAP</i>	<i>DEEP SEA ELEC.</i>



www.ferbo.net

Ferbo Fire ***Division.***

Ferbo Fire is the department dedicated to the design and production of fire-fighting systems, able to offer the most suitable solution according to the different applications, through systems that fully comply with current regulations. The high quality of the products is guaranteed by the use of only primary brand materials and by accurate tests carried out by specialized personnel in an appropriate laboratory.



Fire-fighting systems.

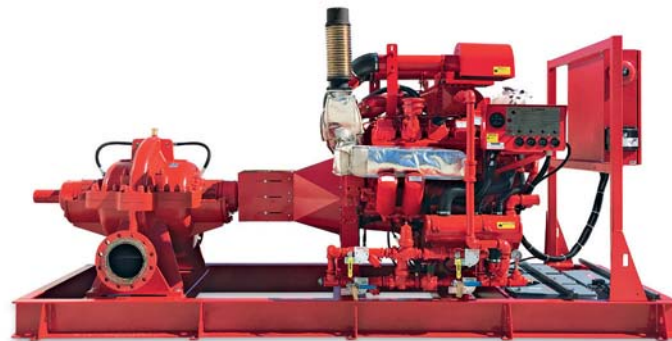


Fire-fighting systems under EN12845 regulation



Fire-fighting systems under EN12845 UNI 10779 regulation

Fire-fighting systems.



Fire-fighting systems NFPA20 regulation



Fire-fighting systems box
UNI11292 - EN12845 - UNI10779

Quality Concept.

Those who choose the Ferbo brand, choose quality. Quality in terms of products, service and customer support. This means taking advantage of the long-standing sector-specific experience and technical know-how, along with the use of advanced technologies, robotic processing systems, first choice materials and highly specialized operators.



Tailor made production.

The ability to fully satisfy all customer needs is the company's added value.

Ferbo is able to offer innovative solutions for irrigation and energy demand and, above all, it allows maximum customization of the products, starting from the initial project, up to the final realization, making use of a large stock of all the best brands on the market.



The Cribis Prime Company, an important recognition awarded to Ferbo srl. This award is assigned by Cribis on the basis of a synthetic indicator named Cribis D&B Rating. This one, based on a statistic algorithm, evaluates the measure of a company financial accountability and loyalty towards its customers. The Cribis Prime Company therefore, stands out as the highest level of evaluation of financial accountability of a company, and it's thereafter uniquely reserved to those companies who are constantly committed to maintain a high financial-economic reliability and which are virtuous in payments towards their suppliers.



**Company
address.**



Ferbo srl - Via Foglia 2 - 61026 Lunano (PU) Italia

Phone +39 0722 700315

Fax + 39 0722 700332

Web www.ferbo.net

Email info@ferbo.net



FOLLOW US ON

